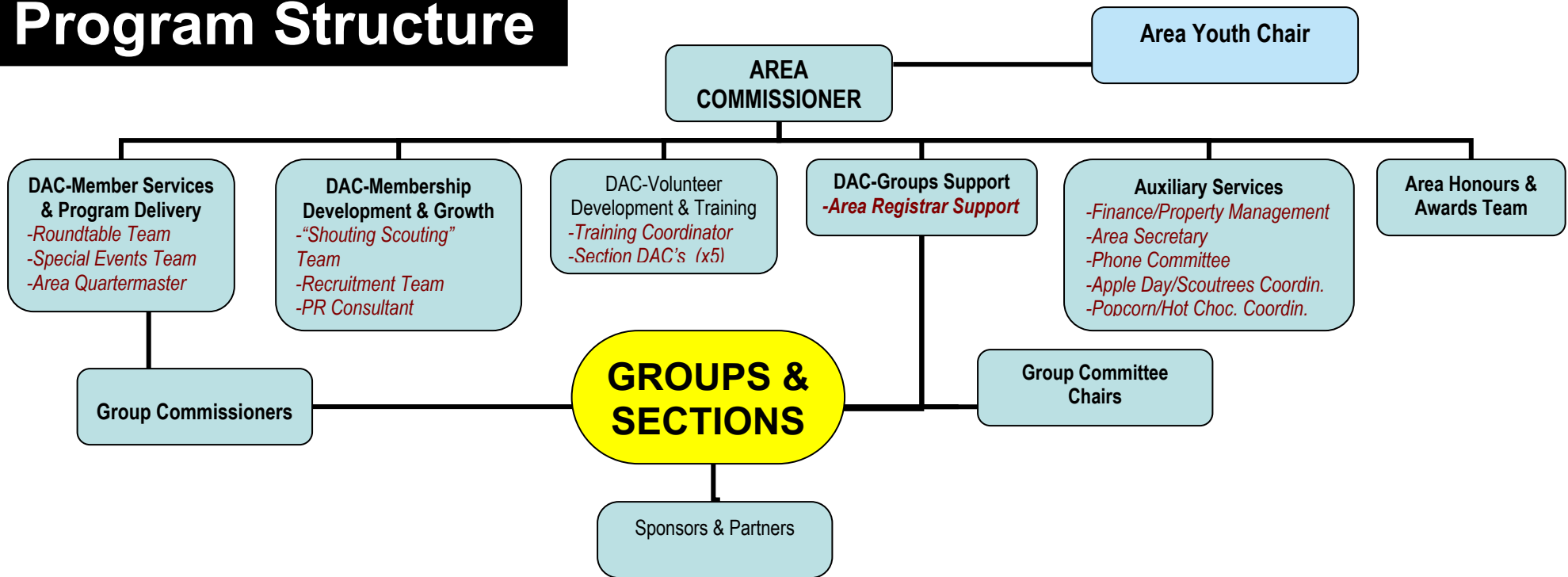


South-Eastern NB Scouting Area Program Structure



The Area Commissioner's role concentrates on Program Delivery and Servicing, focusing resources to supporting the group program delivery through the network of Area Scouters.

The Staff role concentrates on supporting the Commissioner and the area team and focusing on membership development and growth.

TEAMWORK and focus on the mission is the key!

AREA NOMINATION TEAM

- € Ruth Aiken (Past DC)
- € Dick Golding (Admin)
- € Mary Ashton (H & A)
- € Lynn Belliveau (H & A)
- € Jeff Melvin (ST)

